

Gazette Supplement



Student Numbers 2017

Introduction

Student statistics tables for 2017-18 are now available on the Academic Administration Division (AAD) website: www.admin.ox.ac.uk/ac-div/statistics/student.

The statistics provide an overview of the student body based on a snapshot taken on 1 December 2017 and allow comparison with the previous eight years. The same snapshot formed the basis of the Higher Education Student Early Statistics return (www.hefce.ac.uk/data/collect/heses) and the Student Number Planning Exercise, but with some small criteria differences. These are explained on the website.

This supplement contains only high-level overviews of the student population. A complete set of tables and charts is on the website. Six different views are available:

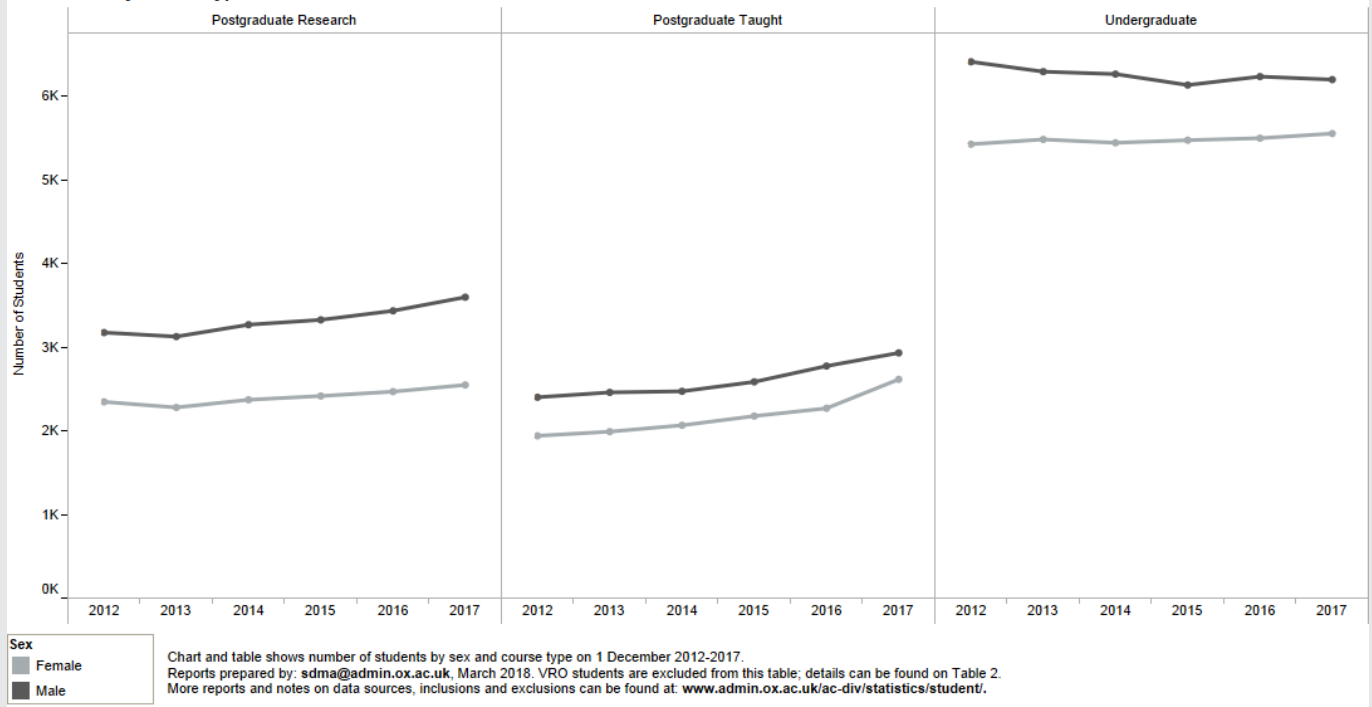
- timelines - trends of different categories, by division, over time
- one-year summary - high-level overview of one year's snapshot
- detail table - complete details by programme/programme type for any single year
- nationality/domicile details
- college populations over time - total student numbers for eight years
- college details - table with filters that allow different views of the college populations in any given year.

A complete set of terms, definitions, abbreviations and notes on exclusions/inclusions can also be found on the website. The data is prepared by the Student Data Management and Analysis team. Questions concerning the content or format of these tables should be directed to sdma@admin.ox.ac.uk.

Charts and tables in this supplement

1. Students by course type and sex, 2012-17	450
2. Students by division, course type and attendance type, 1 December 2017	450
3. Students by college and course type, 1 December 2017	451
4. Students by college, attendance type and sex, 1 December 2017	452

1. Students by course type and sex, 2012-2017



2. Students by division, course type and attendance type, 1 December 2017

Division	Award Programme Type	Full time	Part time	Total	Full time	Part time	Total
Medical Sciences	Postgraduate Research	1,368	14	1,382	99%	1%	100%
	Postgraduate Taught	199	50	249	80%	20%	100%
	Undergraduate	1,703		1,703	100%		100%
Social Sciences	Postgraduate Research	1,202	36	1,238	97%	3%	100%
	Postgraduate Taught	2,097	926	3,023	69%	31%	100%
	Undergraduate	2,045		2,045	100%		100%
MPLS	Postgraduate Research	2,406	6	2,412	100%	0%	100%
	Postgraduate Taught	213	392	605	35%	65%	100%
	Undergraduate	3,615		3,615	100%		100%
Humanities	Postgraduate Research	953	69	1,022	93%	7%	100%
	Postgraduate Taught	843	30	873	97%	3%	100%
	Undergraduate	3,922	2	3,924	100%	0%	100%
Continuing Education	Postgraduate Research		89	89		100%	100%
	Postgraduate Taught	19	775	794	2%	98%	100%
	Undergraduate	64	396	460	14%	86%	100%
University of Oxford	Visiting, Recognised, Other	541		541	100%		100%
Grand Total		21,190	2,785	23,975	88%	12%	100%

Table shows number of students by division, course type and attendance type on 1 December 2017.
 Reports prepared by: sdma@admin.ox.ac.uk, February 2017.
 More reports and notes on data sources, inclusions and exclusions can be found at: www.admin.ox.ac.uk/ac-div/statistics/student/.

3. Students by college and course type, 1 December 2017

College Name	Postgraduate Research		Postgraduate Taught		Undergraduate		Visiting, Recognised, Oth..		Grand Total	
	Students	% of college population	Students	% of college population	Students	% of college population	Students	% of college population	Students	% of college population
All Souls College	8	100.0%							8	100.0%
Balliol College	224	30.8%	135	18.5%	366	50.3%	3	0.4%	728	100.0%
Blackfriars	13	31.0%	24	57.1%	2	4.8%	3	7.1%	42	100.0%
Brasenose College	140	23.0%	102	16.7%	365	59.8%	3	0.5%	610	100.0%
Campion Hall	7	77.8%	2	22.2%					9	100.0%
Christ Church	120	19.1%	76	12.1%	432	68.7%	1	0.2%	629	100.0%
Corpus Christi College	69	20.0%	24	7.0%	252	73.0%			345	100.0%
Exeter College	130	22.7%	82	14.3%	334	58.3%	27	4.7%	573	100.0%
Green Templeton College	206	38.1%	241	44.5%	94	17.4%			541	100.0%
Harris Manchester College	28	11.0%	117	46.1%	108	42.5%	1	0.4%	254	100.0%
Hertford College	137	21.1%	85	13.1%	403	62.0%	25	3.8%	650	100.0%
Jesus College	131	24.0%	67	12.3%	346	63.5%	1	0.2%	545	100.0%
Keble College	138	20.0%	119	17.2%	427	61.9%	6	0.9%	690	100.0%
Kellogg College	212	18.6%	926	81.3%			1	0.1%	1,139	100.0%
Lady Margaret Hall	115	18.0%	95	14.9%	401	62.9%	27	4.2%	638	100.0%
Linacre College	351	71.2%	142	28.8%					493	100.0%
Lincoln College	209	34.5%	91	15.0%	304	50.2%	2	0.3%	606	100.0%
Magdalen College	138	23.1%	52	8.7%	400	67.0%	7	1.2%	597	100.0%
Mansfield College	97	21.9%	71	16.1%	235	53.2%	39	8.8%	442	100.0%
Merton College	192	35.5%	49	9.1%	297	54.9%	3	0.6%	541	100.0%
New College	158	21.4%	139	18.8%	424	57.5%	17	2.3%	738	100.0%
Nuffield College	78	78.0%	21	21.0%			1	1.0%	100	100.0%
Oriel College	128	24.5%	74	14.2%	316	60.5%	4	0.8%	522	100.0%
Pembroke College	140	21.7%	98	15.2%	366	56.7%	41	6.4%	645	100.0%
The Queen's College	131	25.3%	50	9.7%	333	64.4%	3	0.6%	517	100.0%
Regent's Park College	11	5.5%	50	25.1%	124	62.3%	14	7.0%	199	100.0%
St Anne's College	185	23.2%	142	17.8%	440	55.2%	30	3.8%	797	100.0%
St Antony's College	192	42.1%	263	57.7%			1	0.2%	456	100.0%
St Benet's Hall	4	4.9%	19	23.2%	59	72.0%			82	100.0%
St Catherine's College	190	19.2%	252	25.4%	502	50.6%	48	4.8%	992	100.0%
St Cross College	354	64.6%	194	35.4%					548	100.0%
St Edmund Hall	231	30.3%	84	11.0%	407	53.4%	40	5.2%	762	100.0%
St Hilda's College	116	20.0%	65	11.2%	398	68.6%	1	0.2%	580	100.0%
St Hugh's College	127	15.9%	250	31.3%	420	52.6%	1	0.1%	798	100.0%
St John's College	194	30.3%	47	7.3%	397	61.9%	3	0.5%	641	100.0%
St Peter's College	143	24.6%	65	11.2%	355	61.0%	19	3.3%	582	100.0%
St Stephen's House	11	17.7%	46	74.2%	5	8.1%			62	100.0%
Somerville College	115	18.9%	76	12.5%	413	68.0%	3	0.5%	607	100.0%
Trinity College	104	24.4%	33	7.7%	289	67.8%			426	100.0%
University College	181	29.2%	57	9.2%	381	61.6%			619	100.0%
Wadham College	130	18.8%	73	10.6%	459	66.5%	28	4.1%	690	100.0%
Wolfson College	443	76.2%	138	23.8%					581	100.0%
Worcester College	104	16.3%	81	12.7%	429	67.1%	25	3.9%	639	100.0%
Wycliffe Hall	7	4.1%	31	18.2%	79	46.5%	53	31.2%	170	100.0%
No College			686	61.2%	375	33.5%	60	5.4%	1,121	100.0%
Ripon College Cuddesdon	1	4.8%	10	47.6%	10	47.6%			21	100.0%
Grand Total	6,143	25.6%	5,544	23.1%	11,747	49.0%	541	2.3%	23,975	100.0%

Table shows number of students by college and course type on 1 December 2017.

Reports prepared by: sdma@admin.ox.ac.uk, February 2017.

More reports and notes on data sources, inclusions and exclusions can be found at: www.admin.ox.ac.uk/ac-div/statistics/student/.

4. Students by college, attendance type and sex, 1 December 2017

College Name	Full time				Part time				Grand Total	
	Female		Male		Female		Male		Students	% of college population
	Students	% of college population	Students	% of college population	Students	% of college population	Students	% of college population		
All Souls College	4	50.0%	4	50.0%					8	100.0%
Balliol College	292	40.1%	408	56.0%	6	0.8%	22	3.0%	728	100.0%
Blackfriars	9	21.4%	27	64.3%	1	2.4%	5	11.9%	42	100.0%
Brasenose College	263	43.1%	312	51.1%	17	2.8%	18	3.0%	610	100.0%
Campion Hall			9	100.0%					9	100.0%
Christ Church	259	41.2%	338	53.7%	4	0.6%	28	4.5%	629	100.0%
Corpus Christi College	139	40.3%	203	58.8%	2	0.6%	1	0.3%	345	100.0%
Exeter College	261	45.5%	297	51.8%	6	1.0%	9	1.6%	573	100.0%
Green Templeton College	277	51.2%	231	42.7%	11	2.0%	22	4.1%	541	100.0%
Harris Manchester College	109	42.9%	103	40.6%	16	6.3%	26	10.2%	254	100.0%
Hertford College	318	48.9%	315	48.5%	5	0.8%	12	1.8%	650	100.0%
Jesus College	248	45.5%	281	51.6%	9	1.7%	7	1.3%	545	100.0%
Keble College	280	40.6%	380	55.1%	7	1.0%	23	3.3%	690	100.0%
Kellogg College	136	11.9%	132	11.6%	298	26.2%	573	50.3%	1,139	100.0%
Lady Margaret Hall	318	49.8%	309	48.4%	7	1.1%	4	0.6%	638	100.0%
Linacre College	221	44.8%	244	49.5%	11	2.2%	17	3.4%	493	100.0%
Lincoln College	300	49.5%	299	49.3%	1	0.2%	6	1.0%	606	100.0%
Magdalen College	243	40.7%	354	59.3%					597	100.0%
Mansfield College	204	46.2%	232	52.5%	2	0.5%	4	0.9%	442	100.0%
Merton College	239	44.2%	293	54.2%	1	0.2%	8	1.5%	541	100.0%
New College	277	37.5%	381	51.6%	50	6.8%	30	4.1%	738	100.0%
Nuffield College	46	46.0%	54	54.0%					100	100.0%
Oriel College	234	44.8%	277	53.1%	4	0.8%	7	1.3%	522	100.0%
Pembroke College	301	46.7%	324	50.2%	7	1.1%	13	2.0%	645	100.0%
The Queen's College	244	47.2%	272	52.6%	1	0.2%			517	100.0%
Regent's Park College	102	51.3%	68	34.2%	11	5.5%	18	9.0%	199	100.0%
St Anne's College	367	46.0%	366	45.9%	21	2.6%	43	5.4%	797	100.0%
St Antony's College	224	49.1%	223	48.9%	5	1.1%	4	0.9%	456	100.0%
St Benet's Hall	31	37.8%	49	59.8%	1	1.2%	1	1.2%	82	100.0%
St Catherine's College	404	40.7%	498	50.2%	38	3.8%	52	5.2%	992	100.0%
St Cross College	262	47.8%	281	51.3%	2	0.4%	3	0.5%	548	100.0%
St Edmund Hall	319	41.9%	438	57.5%	3	0.4%	2	0.3%	762	100.0%
St Hilda's College	281	48.4%	295	50.9%	2	0.3%	2	0.3%	580	100.0%
St Hugh's College	324	40.6%	368	46.1%	31	3.9%	75	9.4%	798	100.0%
St John's College	295	46.0%	346	54.0%					641	100.0%
St Peter's College	263	45.2%	313	53.8%	3	0.5%	3	0.5%	582	100.0%
St Stephen's House	28	45.2%	26	41.9%	3	4.8%	5	8.1%	62	100.0%
Somerville College	292	48.1%	291	47.9%	15	2.5%	9	1.5%	607	100.0%
Trinity College	187	43.9%	234	54.9%	1	0.2%	4	0.9%	426	100.0%
University College	261	42.2%	358	57.8%					619	100.0%
Wadham College	312	45.2%	370	53.6%	2	0.3%	6	0.9%	690	100.0%
Wolfson College	263	45.3%	299	51.5%	10	1.7%	9	1.5%	581	100.0%
Worcester College	307	48.0%	319	49.9%	1	0.2%	12	1.9%	639	100.0%
Wycliffe Hall	68	40.0%	74	43.5%	12	7.1%	16	9.4%	170	100.0%
No College	34	3.0%	37	3.3%	556	49.6%	494	44.1%	1,121	100.0%
Ripon College Cuddesdon	6	28.6%	6	28.6%	6	28.6%	3	14.3%	21	100.0%
Grand Total	9,852	41.1%	11,338	47.3%	1,189	5.0%	1,596	6.7%	23,975	100.0%

Count of students and percentage of students broken down by attendance type and sex by college. The data is based on a snapshot taken on 1 December 2017.