

---

# GAZETTE

Wednesday 10 March 2010

Supplement (1) to No. 4911

---



## Student Numbers 2010

Student statistics tables for 2009–10 are now available on the Academic Administration Division (AAD) Student Data Management and Analysis Web site ([www.admin.ox.ac.uk/sr/statistics.shtml](http://www.admin.ox.ac.uk/sr/statistics.shtml)).

The statistics provide an overview of the student body based on a ‘snapshot’ taken on 1 December 2009, and allow comparison with the previous three years. The same ‘snapshot’ forms the basis of the Higher Education Student Early Statistics return ([www.hefce.ac.uk/learning/datacoll/heses/](http://www.hefce.ac.uk/learning/datacoll/heses/)) and the Student Number Planning Exercise, but with some small criteria differences. These are explained on the Web site.

This supplement contains only the high-level overviews of the student population. The full set of tables and charts are on the Web site, in the following categories:

- Gender and programme of study
- College, programme type and gender

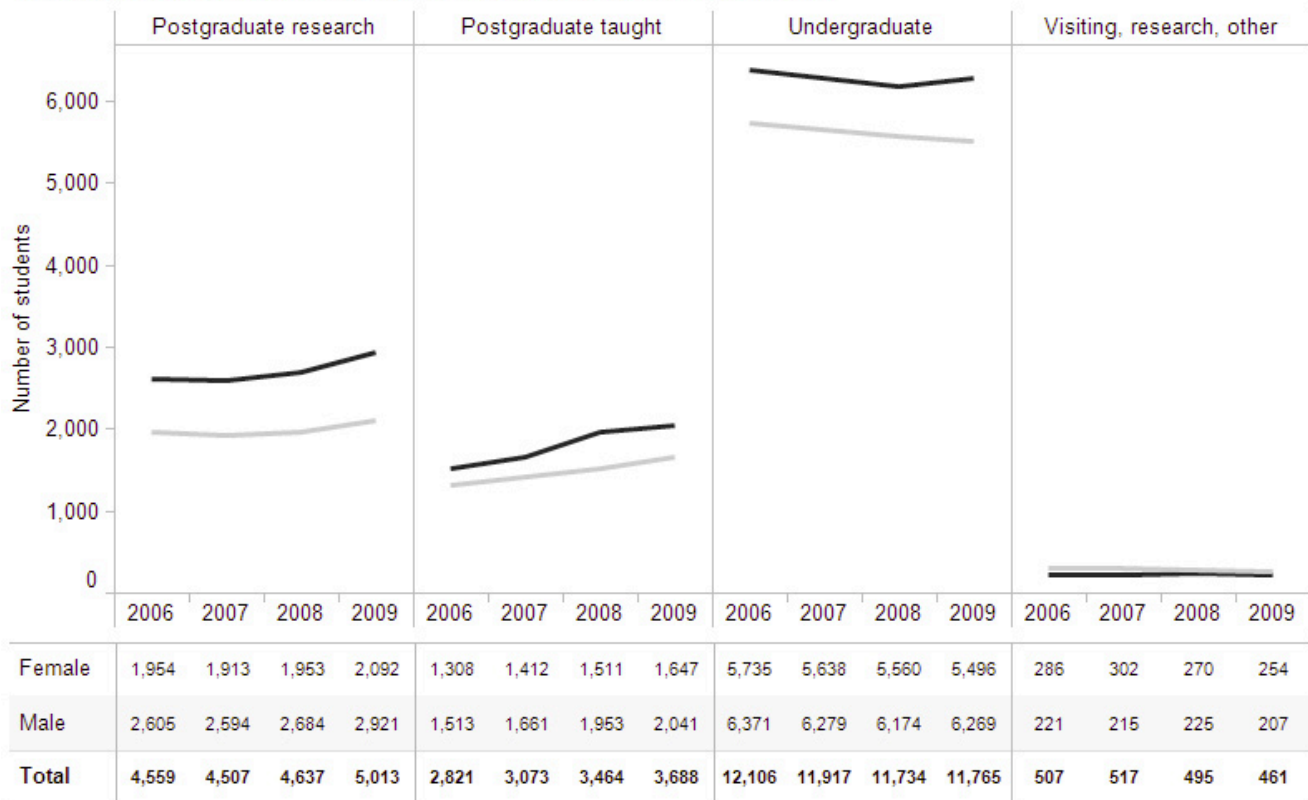
- Fee status, programme type and division
- Domicile, programme type and division
- Nationality, programme type and division
- Disability, programme type and division
- Ethnicity, programme type and division

In order to view the reports on the Web site, it is necessary to download and install Tableau Reader, which is free. Full instructions are on the Web site. The reports are based on data held in the Oracle Student System (OSS) and also include data on the Department for Continuing Education (OUDCE). Complete terms and definitions, including notes on exclusions and inclusions, can also be found on the Web site.

The data is prepared by the Student Data Management and Analysis team. Questions concerning the content or format of these tables should be directed to [sdma@admin.ox.ac.uk](mailto:sdma@admin.ox.ac.uk).

Table 1	Number of students by programme type and gender, 2006–9	710
Table 2	Programme type and attendance by division, 1 December 2009	710
Table 3	Number of students by college and programme type, 1 December 2009	711

### 1. Number of students by programme type and gender, 2006-2009



#### gender

■ Female

■ Male

Chart and table shows number of students by gender and programme type on 1st December, 2006-2009.

Reports prepared by: [SDMA@admin.ox.ac.uk](mailto:SDMA@admin.ox.ac.uk), Feb 2010

More reports and notes on data sources, inclusions and exclusions can be found at <http://www.admin.ox.ac.uk/sr/statistics.shtml>

### 2. Division, programme type and attendance, 1st December 2009

Division	Programme type	(number)			(% )		
		Full time	Part time	Total	Full time	Part time	Total
Medical Sciences	Postgraduate research	1,008		1,008	100%		100%
	Postgraduate taught	186	16	202	92%	8%	100%
	Undergraduate	1,655		1,655	100%		100%
	<b>Total</b>	<b>2,849</b>	<b>16</b>	<b>2,865</b>	<b>99%</b>	<b>1%</b>	<b>100%</b>
Mathematical, Physical and Life Sciences	Postgraduate research	1,760	4	1,764	100%	0%	100%
	Postgraduate taught	185		185	100%		100%
	Undergraduate	3,499		3,499	100%		100%
	<b>Total</b>	<b>5,444</b>	<b>4</b>	<b>5,448</b>	<b>100%</b>	<b>0%</b>	<b>100%</b>
Social Sciences	Postgraduate research	1,173	14	1,187	99%	1%	100%
	Postgraduate taught	1,642	251	1,893	87%	13%	100%
	Undergraduate	2,088		2,088	100%		100%
	<b>Total</b>	<b>4,903</b>	<b>265</b>	<b>5,168</b>	<b>95%</b>	<b>5%</b>	<b>100%</b>
Humanities	Postgraduate research	980	23	1,003	98%	2%	100%
	Postgraduate taught	683	15	698	98%	2%	100%
	Undergraduate	4,098	12	4,110	100%	0%	100%
	<b>Total</b>	<b>5,761</b>	<b>50</b>	<b>5,811</b>	<b>99%</b>	<b>1%</b>	<b>100%</b>
Continuing Education	Postgraduate research		51	51		100%	100%
	Postgraduate taught	9	701	710	1%	99%	100%
	Undergraduate	20	393	413	5%	95%	100%
	<b>Total</b>	<b>29</b>	<b>1,145</b>	<b>1,174</b>	<b>2%</b>	<b>98%</b>	<b>100%</b>
VRO	Visiting, research, other	461		461	100%		100%
	<b>Total</b>	<b>461</b>		<b>461</b>	<b>100%</b>		<b>100%</b>
<b>Grand Total</b>		<b>19,447</b>	<b>1,480</b>	<b>20,927</b>	<b>93%</b>	<b>7%</b>	<b>100%</b>

Table shows number of students by division, programme and attendance type on 1st December 2009.

Reports prepared by: [SDMA@admin.ox.ac.uk](mailto:SDMA@admin.ox.ac.uk), Feb 2010

More reports and notes on data sources, inclusions and exclusions can be found at

<http://www.admin.ox.ac.uk/sr/statistics.shtml>

**3. Number of students by college and programme type, 1st December 2009**

College name	Postgraduate research		Postgraduate taught		Undergraduate		Visiting, research, other		Grand Total	
	(number)	% of students in college	(number)	% of students in college	(number)	% of students in college	(number)	% of students in college	(number)	% of students in college
All Souls College	3	75.0%	1	25.0%					4	100.0%
Balliol College	235	33.6%	81	11.6%	383	54.7%	1	0.1%	700	100.0%
Blackfriars	2	5.4%	4	10.8%	12	32.4%	19	51.4%	37	100.0%
Brasenose College	140	24.3%	69	12.0%	365	63.3%	3	0.5%	577	100.0%
Campion Hall	8	100.0%							8	100.0%
Christ Church	147	22.2%	76	11.5%	438	66.2%	1	0.2%	662	100.0%
Corpus Christi College	71	19.9%	34	9.6%	248	69.7%	3	0.8%	356	100.0%
Exeter College	125	21.8%	76	13.2%	343	59.8%	30	5.2%	574	100.0%
Green Templeton College	174	36.6%	205	43.1%	96	20.2%	1	0.2%	476	100.0%
Harris Manchester College	21	10.8%	87	44.8%	85	43.8%	1	0.5%	194	100.0%
Hertford College	114	19.2%	58	9.8%	396	66.8%	25	4.2%	593	100.0%
Jesus College	120	23.2%	48	9.3%	347	67.1%	2	0.4%	517	100.0%
Keble College	137	21.6%	63	9.9%	423	66.7%	11	1.7%	634	100.0%
Kellogg College	92	17.0%	450	83.0%					542	100.0%
Lady Margaret Hall	110	18.2%	75	12.4%	400	66.0%	21	3.5%	606	100.0%
Linacre College	287	71.8%	113	28.3%					400	100.0%
Lincoln College	208	33.9%	83	13.5%	318	51.9%	4	0.7%	613	100.0%
Magdalen College	143	23.4%	46	7.5%	415	68.0%	6	1.0%	610	100.0%
Mansfield College	46	13.7%	35	10.4%	226	67.3%	29	8.6%	336	100.0%
Merton College	228	37.7%	61	10.1%	314	51.9%	2	0.3%	605	100.0%
New College	155	24.0%	62	9.6%	418	64.6%	12	1.9%	647	100.0%
Nuffield College	71	74.7%	22	23.2%			2	2.1%	95	100.0%
Oriel College	103	22.3%	55	11.9%	302	65.5%	1	0.2%	461	100.0%
Pembroke College	66	12.3%	75	14.0%	367	68.3%	29	5.4%	537	100.0%
Regent's Park College	20	11.6%	24	14.0%	114	66.3%	14	8.1%	172	100.0%
Ripon College			13	21.3%	48	78.7%			61	100.0%
Somerville College	60	12.4%	20	4.1%	401	83.2%	1	0.2%	482	100.0%
St Anne's College	119	17.0%	114	16.3%	444	63.5%	22	3.1%	699	100.0%
St Antony's College	225	53.3%	192	45.5%			5	1.2%	422	100.0%
St Benet's Hall	1	2.1%			46	97.9%			47	100.0%
St Catherine's College	144	19.4%	72	9.7%	499	67.3%	26	3.5%	741	100.0%
St Cross College	226	53.3%	198	46.7%					424	100.0%
St Edmund Hall	91	15.3%	75	12.6%	404	68.1%	23	3.9%	593	100.0%
St Hilda's College	63	11.7%	76	14.1%	398	73.8%	2	0.4%	539	100.0%
St Hugh's College	87	14.1%	132	21.4%	397	64.3%	1	0.2%	617	100.0%
St John's College	179	29.0%	34	5.5%	399	64.7%	5	0.8%	617	100.0%
St Peter's College	58	12.7%	34	7.4%	348	76.0%	18	3.9%	458	100.0%
St Stephen's House	2	4.1%	27	55.1%	20	40.8%			49	100.0%
The Queen's College	97	20.6%	27	5.7%	343	72.8%	4	0.8%	471	100.0%
Trinity College	67	16.8%	31	7.8%	300	75.2%	1	0.3%	399	100.0%
University College	153	26.8%	52	9.1%	364	63.9%	1	0.2%	570	100.0%
Wadham College	89	14.4%	36	5.8%	458	74.2%	34	5.5%	617	100.0%
Wolfson College	397	74.3%	135	25.3%			2	0.4%	534	100.0%
Worcester College	121	19.6%	65	10.5%	416	67.3%	16	2.6%	618	100.0%
Wycliffe Hall	8	5.8%	11	8.0%	57	41.6%	61	44.5%	137	100.0%
No college			441	50.3%	413	47.1%	22	2.5%	876	100.0%
<b>Grand Total</b>	<b>5,013</b>	<b>24.0%</b>	<b>3,688</b>	<b>17.6%</b>	<b>11,765</b>	<b>56.2%</b>	<b>461</b>	<b>2.2%</b>	<b>20,927</b>	<b>100.0%</b>

Table shows number of students by college and programme type on 1st December 2009.

Reports prepared by: [SDMA@admin.ox.ac.uk](mailto:SDMA@admin.ox.ac.uk), Feb 2010

More reports and notes on data sources, inclusions and exclusions can be found at

<http://www.admin.ox.ac.uk/sr/statistics.shtml>